

BORA |



LINCOLN HIGH SCHOOL

Design Advisory Group Meeting Eight

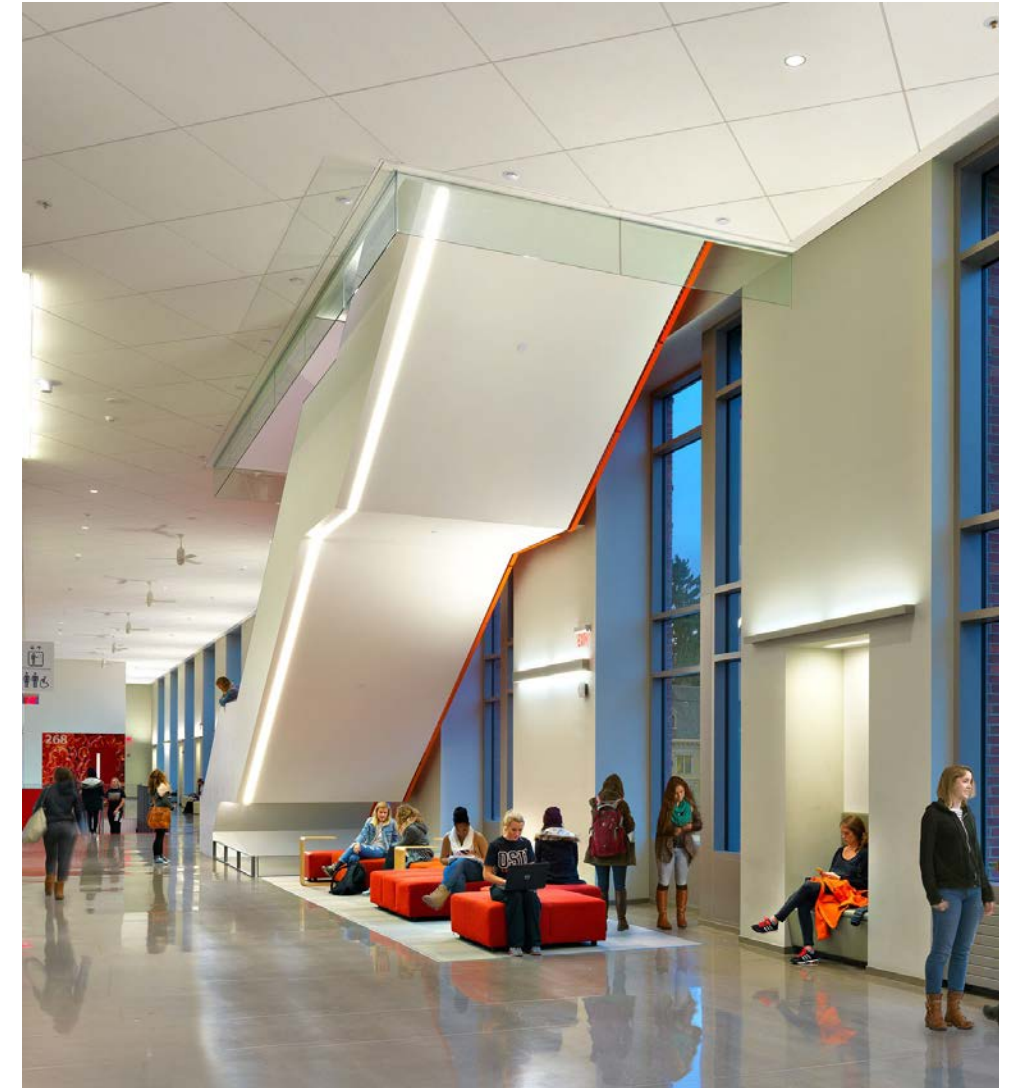
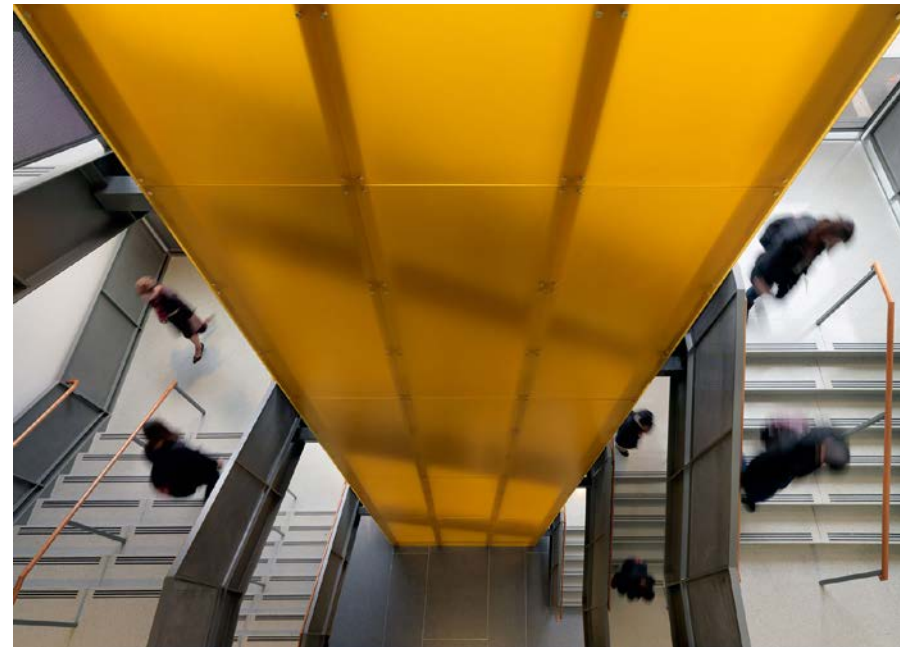
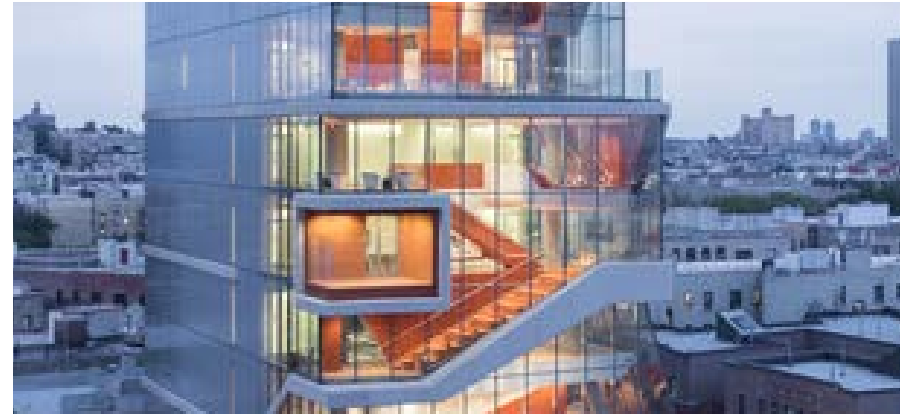
Project Update
March 14, 2019

AGENDA

Welcome / Status Update	5 minutes	Erik Gerding
Exterior Review	70 minutes	Bora
Site Plan	20 minutes	Bora
Public Comment Period	10 minutes	All
Adjourn		

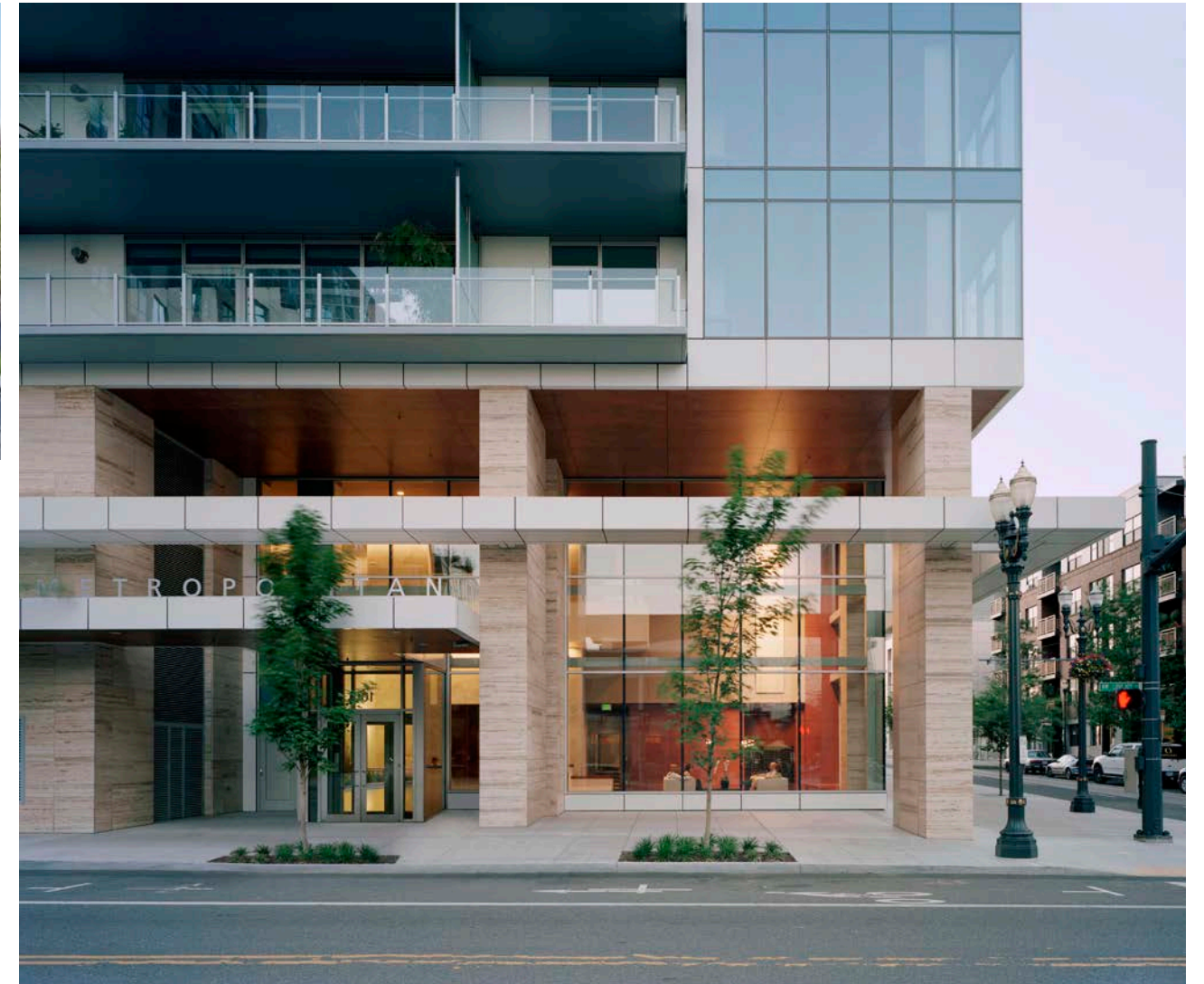
DESIGN GOALS

Achieve a Visible Expression of Movement



DESIGN GOALS

Create an Active Urban Edge



DESIGN GOALS

Create a Cohesive and Singular Building Expressed in Form and Materiality



DAG 5 Exterior Character Exercise



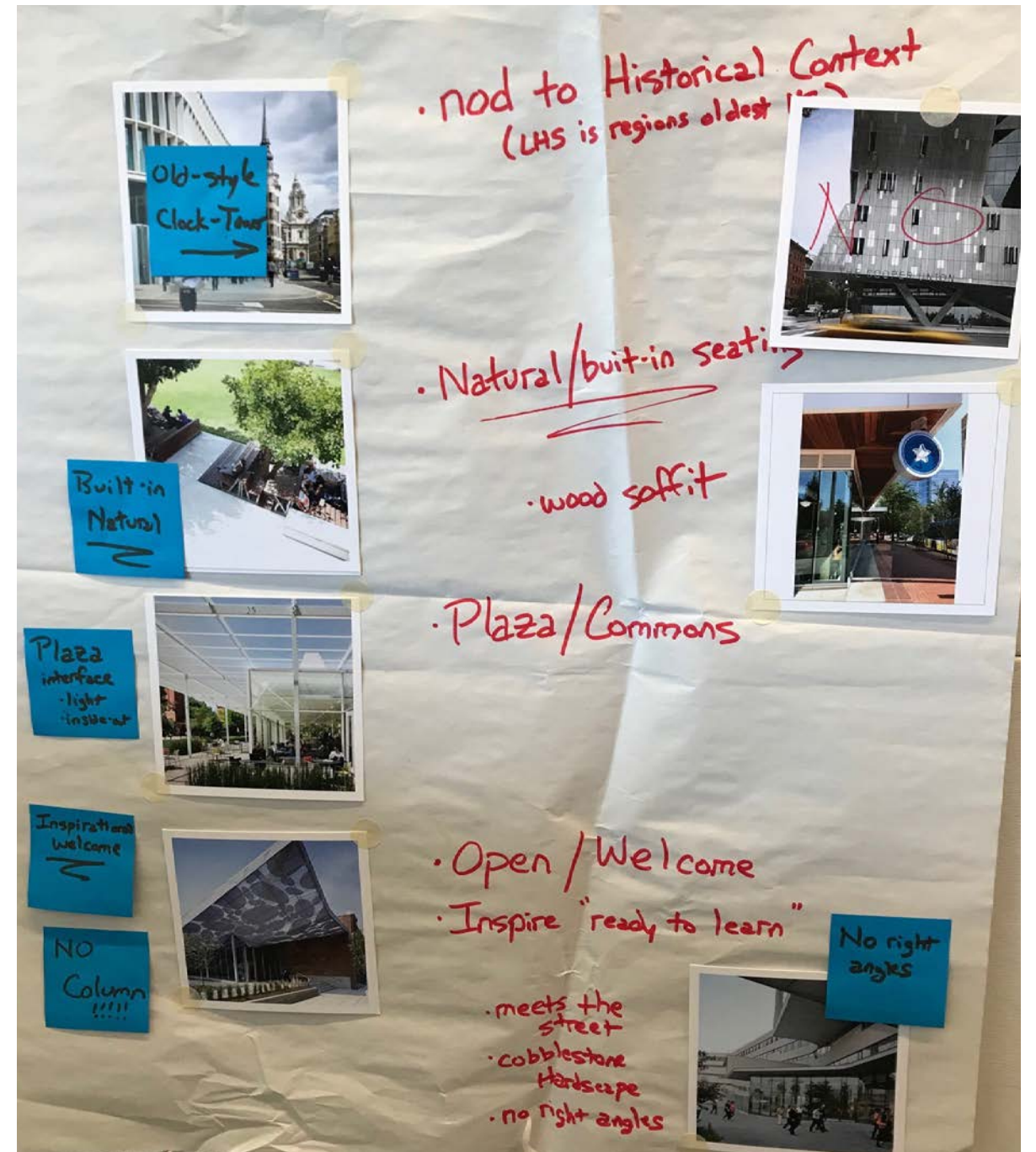
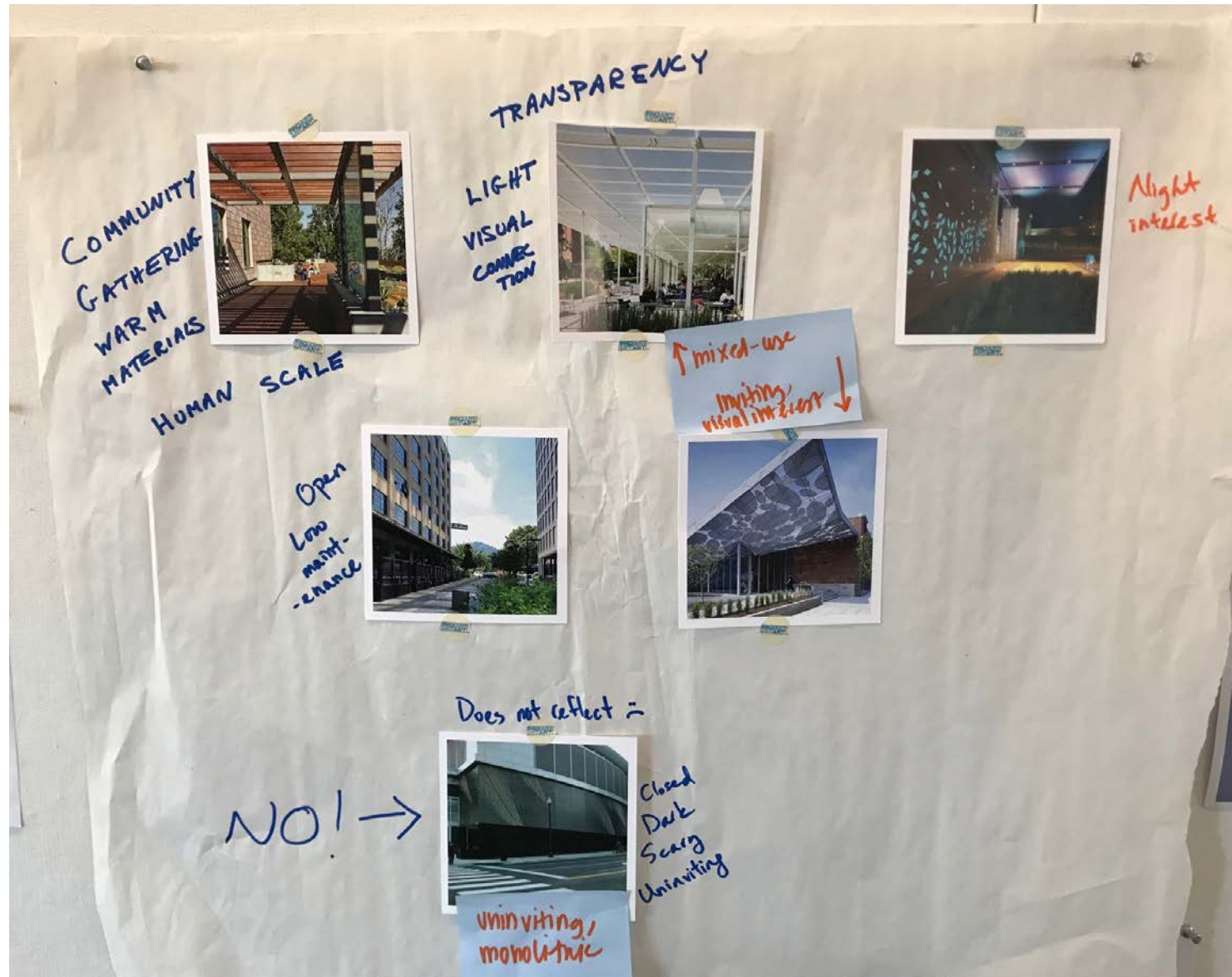
DAG 5 Exterior Building Character: Urban Schools

- GLASS FOR SIGHT LINES
- REGULAR WINDOW SPACINGS
- OVERHANGS / VOLUMES
- LEVEL 1 GLASS FOR INVITING PUBLIC
- GRAND ENTRANCE / ATRIUM
- OPEN COURTYARD
- BRICK + GLASS
- PLAYFUL
- HINGED / PERMEABLE
- GRAPHIC
- EMBRACES STREET SPACE
- BREAK UP TOWER WITH OUTDOOR SPACES / MATERIALS / WINDOW LOCATIONS
- EXPOSED STRUCTURE
- HORIZONTAL ELEMENTS TO BREAK UP TOWER
- REGULAR W/ INTERESTING ITEMS THAT MAKE SENSE.
- TRANSLATES TO 7 story tower.
- DARK
- FORTRESS
- INSTITUTIONAL
- CONFORMIST
- BACKWARD LOOKING

NO!

- HORIZONTAL ELEMENTS TO BREAK UP TOWER
- TRANSLATES TO 7 story tower.
- BACKWARD LOOKING
- interesting windows
- lots of light
- fits right up to sidewalk
- Prison
- Cardinal Correction Facility
- Jenga tower twisted
- lots of windows
- openness for street
- low maintenance landscape
- We think this looks like the other side of the same building
- open spacious personality
- memorable
- NOT sure we like everything here
- elements of wood + water
- interesting architecture
- feels urban but warm
- non conventional shape

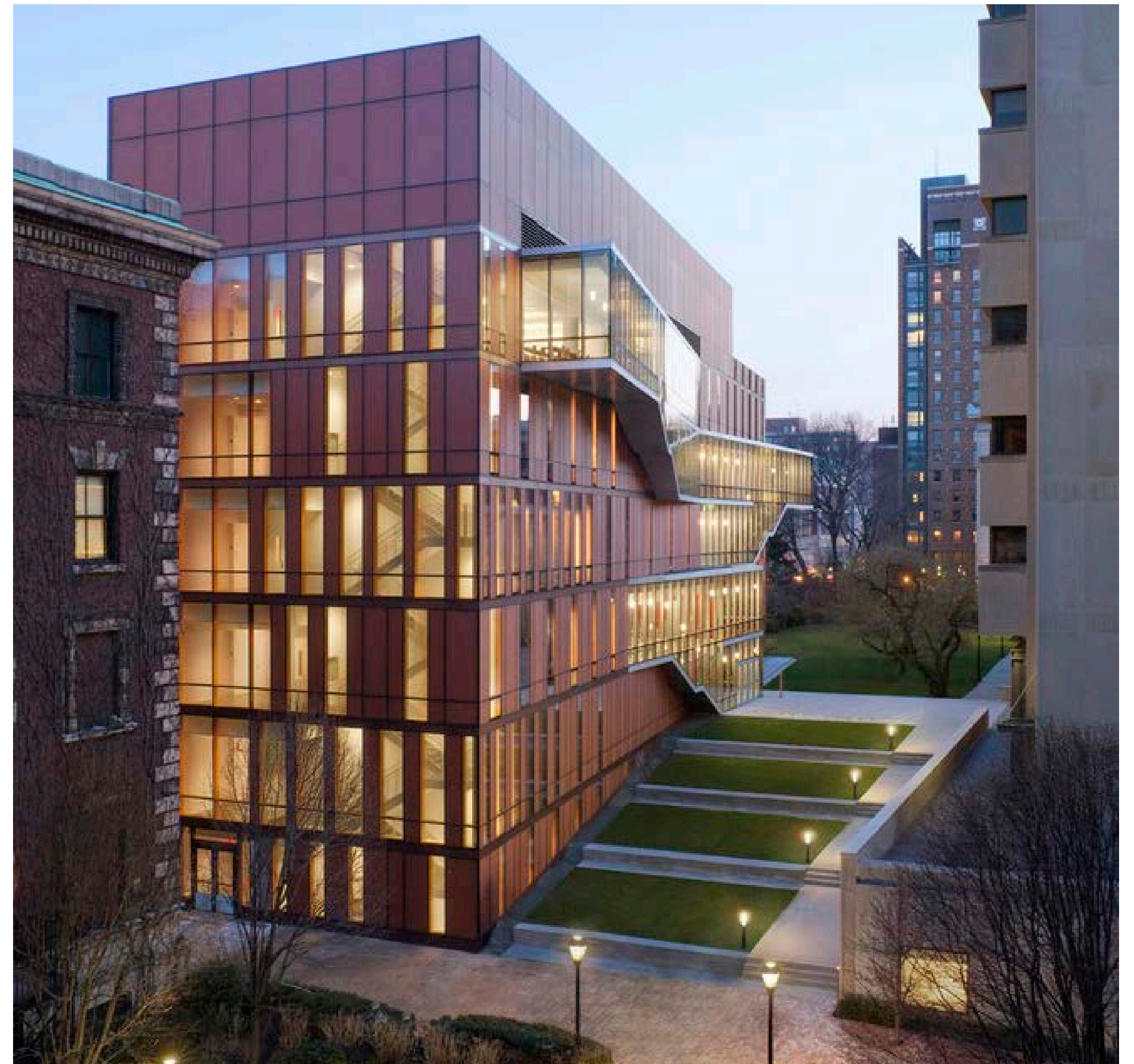
DAG 5 Exterior Building Character: Public Realm



EXTERIOR BUILDING CHARACTER URBAN SCHOOLS | SELECTED AT DAG 5



LINCOLN HIGH SCHOOL MODERNIZATION DAG 8 | MARCH 14, 2019



EXTERIOR BUILDING CHARACTER URBAN SCHOOLS | SELECTED AT DAG 5



LINCOLN HIGH SCHOOL MODERNIZATION DAG 8 | MARCH 14, 2019



BORA

EXTERIOR BUILDING CHARACTER URBAN SCHOOLS | SELECTED AT DAG 5



LINCOLN HIGH SCHOOL MODERNIZATION DAG 8 | MARCH 14, 2019



BORA

EXTERIOR BUILDING CHARACTER URBAN SCHOOLS | SELECTED AT DAG 5



LINCOLN HIGH SCHOOL MODERNIZATION DAG 8 | MARCH 14, 2019



EXTERIOR BUILDING CHARACTER PUBLIC REALM | SELECTED AT DAG 5



LINCOLN HIGH SCHOOL MODERNIZATION DAG 8 | MARCH 14, 2019



EXTERIOR BUILDING CHARACTER PUBLIC REALM | SELECTED AT DAG 5



LINCOLN HIGH SCHOOL MODERNIZATION DAG 8 | MARCH 14, 2019



EXTERIOR BUILDING CHARACTER PUBLIC REALM | SELECTED AT DAG 5



EXTERIOR BUILDING CHARACTER PUBLIC REALM | SELECTED AT DAG 5



DAG 5 EXTERIOR BUILDING CHARACTER INTERACTIVE EXERCISE COMMENTS

Urban Schools

Soaring and inspirational

Dynamic facades that flow and face street

Glassy, ground floor

Warm tone, light color; Texture

Non-conventional shape

Express Circulation

Slight Angles/Shifts

Natural materials but still easily maintained

Horizontal elements to break up height

Regular windows but still playful

Full glass for views to city and West Hills

Public Realm

Screen to Sky

Night Interest

Visually interesting

Transparency

Looks like it is occupied all the time

Students could be help make the facade

Perforated covering - not solid necessarily

A nod the history of Lincoln somehow - not literal

Bring the outside in and inside out; Commons in particular

Opportunity to make a non-rectangular building because of the urban context

ARTICULATED PRECEDENT IMAGES



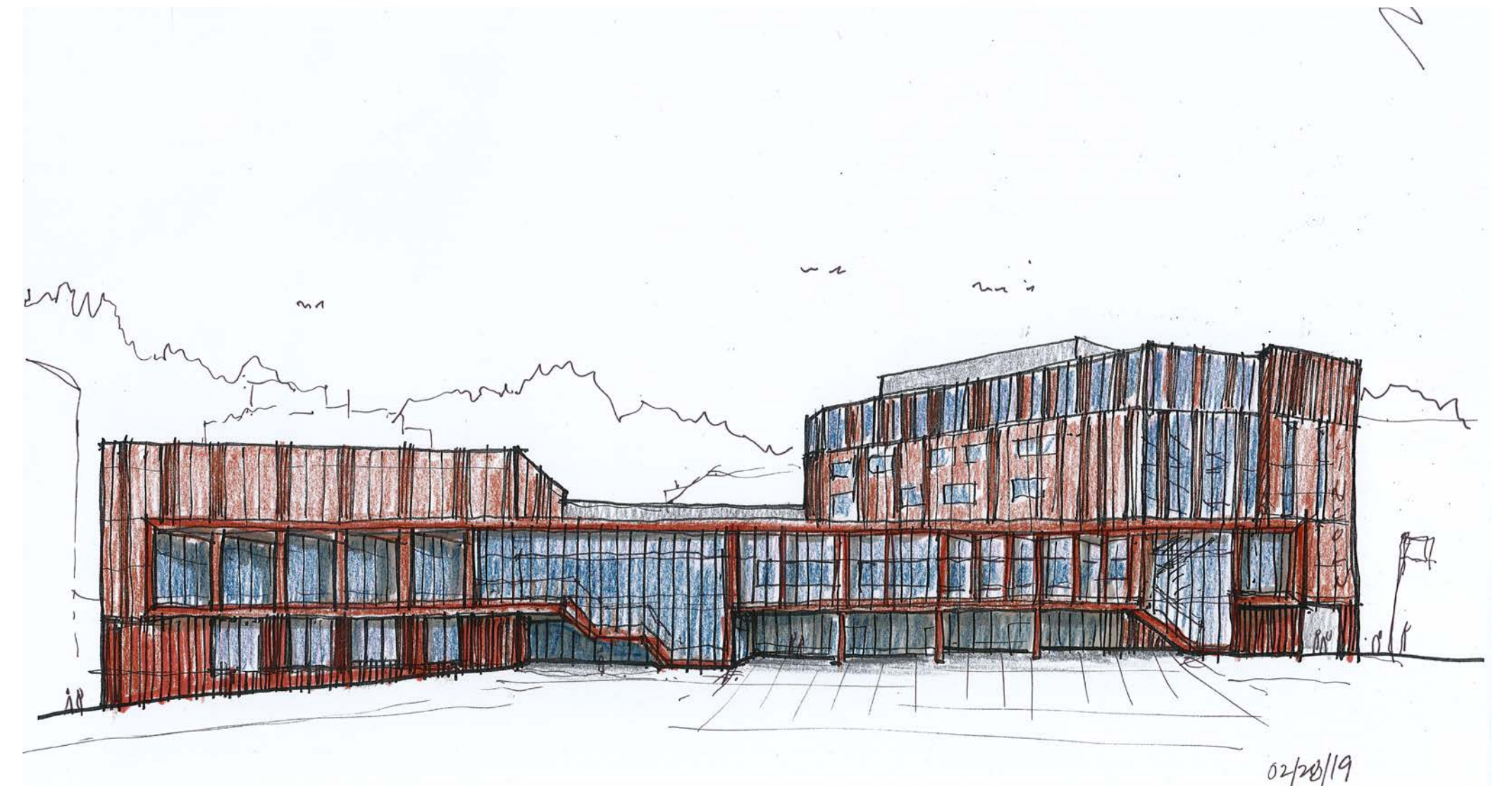
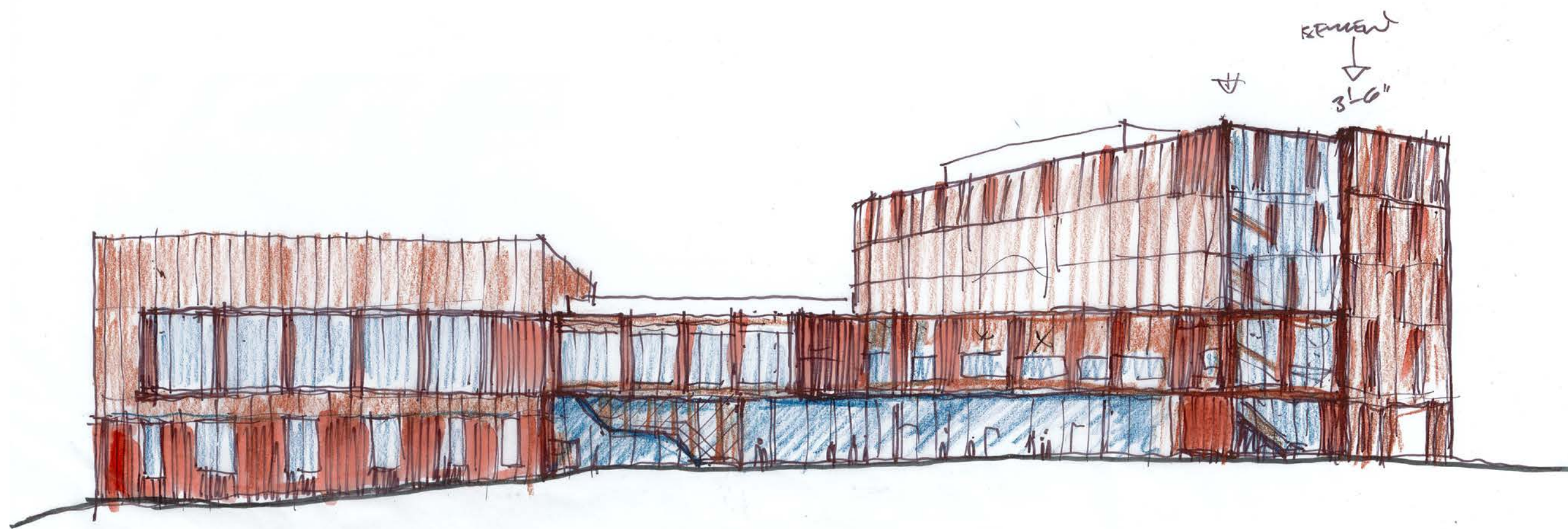
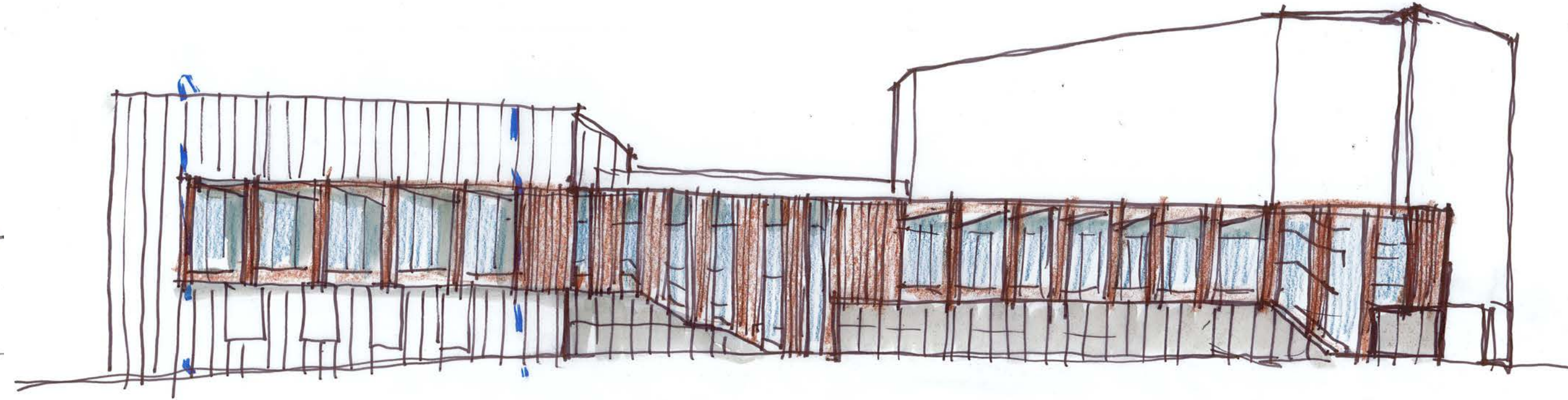
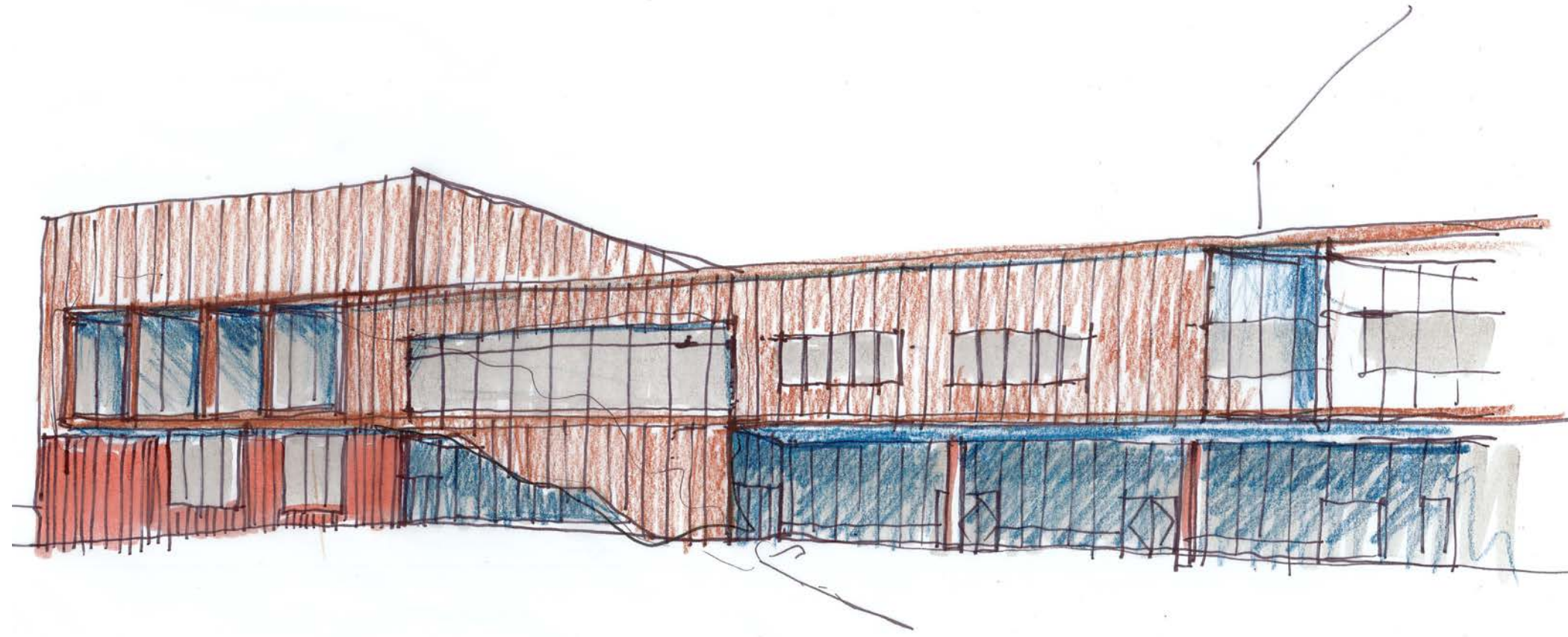
LOCAL PORTLAND ARTICULATED PRECEDENT IMAGES



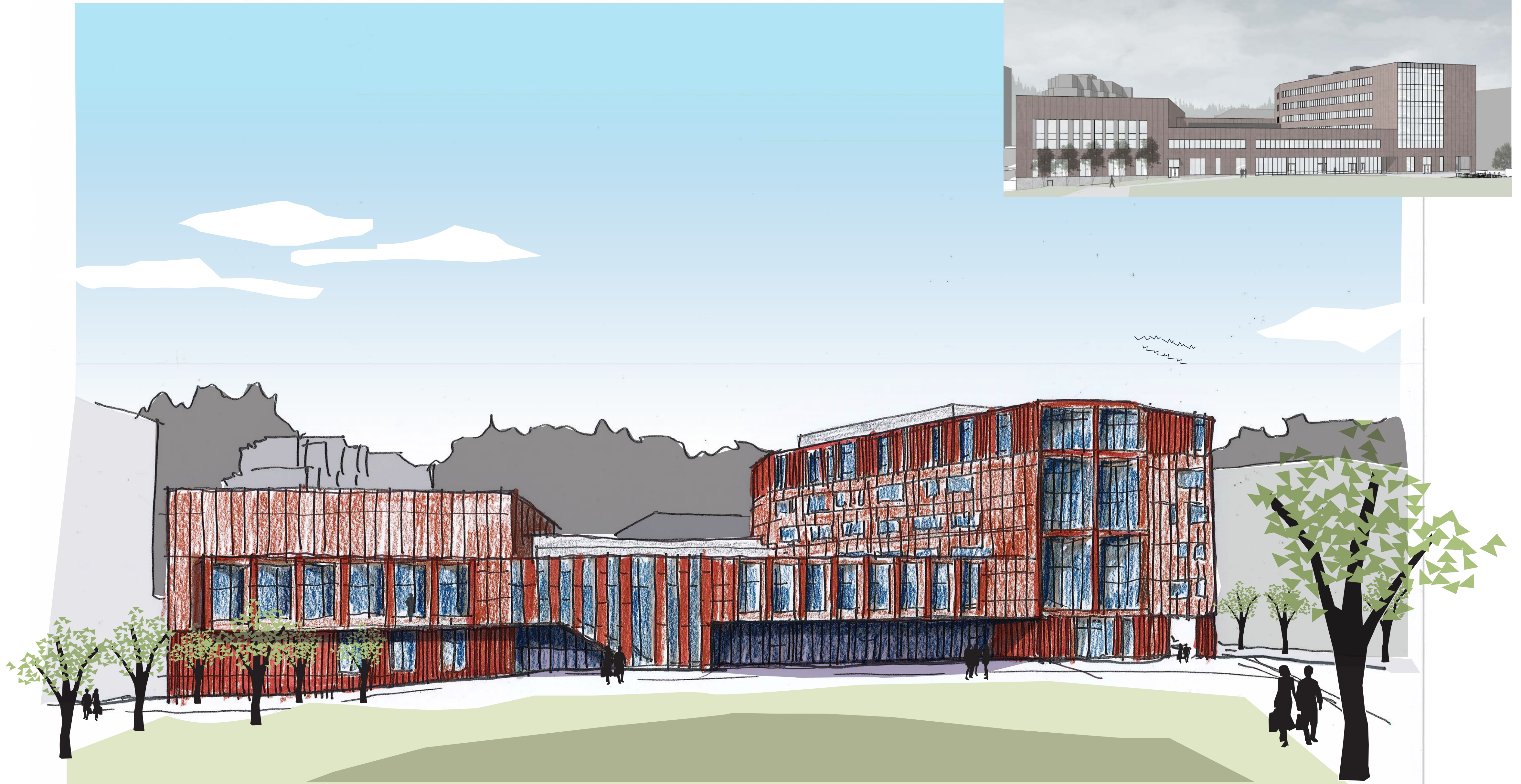
EXTERIOR VIEWS DAG 7



VIEW FROM ATHLETIC FIELDS DEVELOPMENTAL SKETCHES



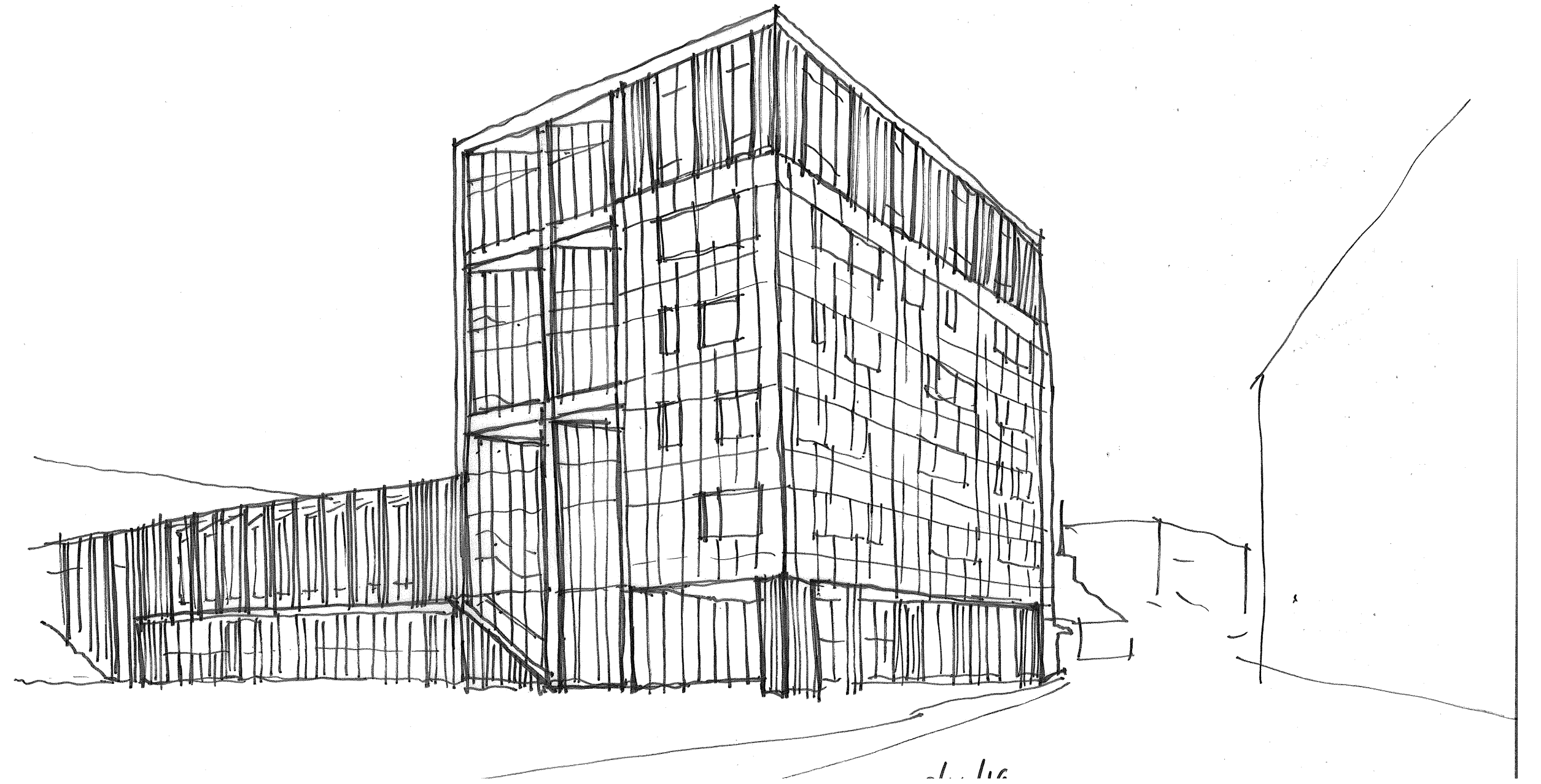
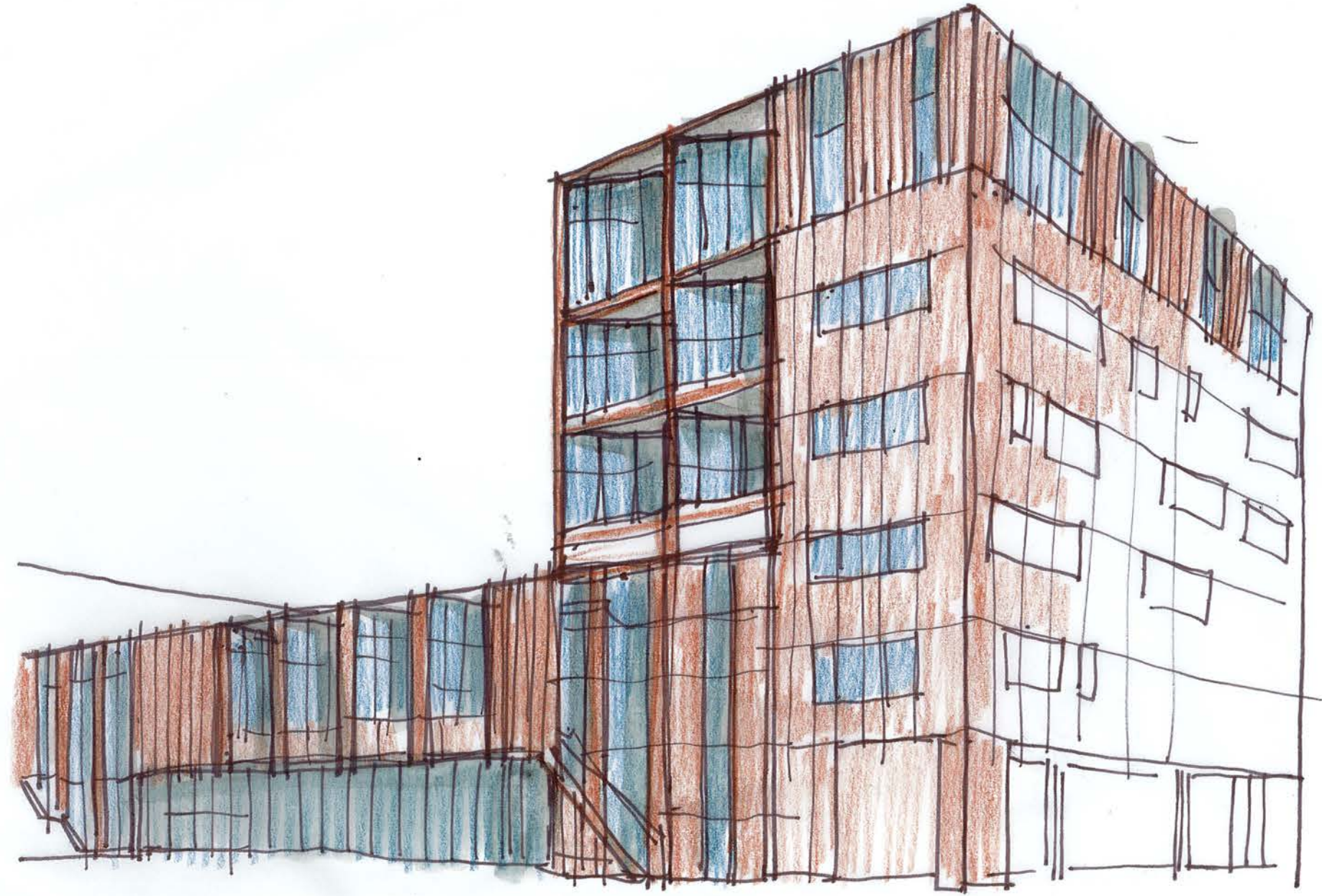
VIEW FROM ATHLETIC FIELDS CURRENT SKETCH



VIEW FROM ATHLETIC FIELDS



VIEW FROM SW SALMON STREET DEVELOPMENTAL SKETCHES



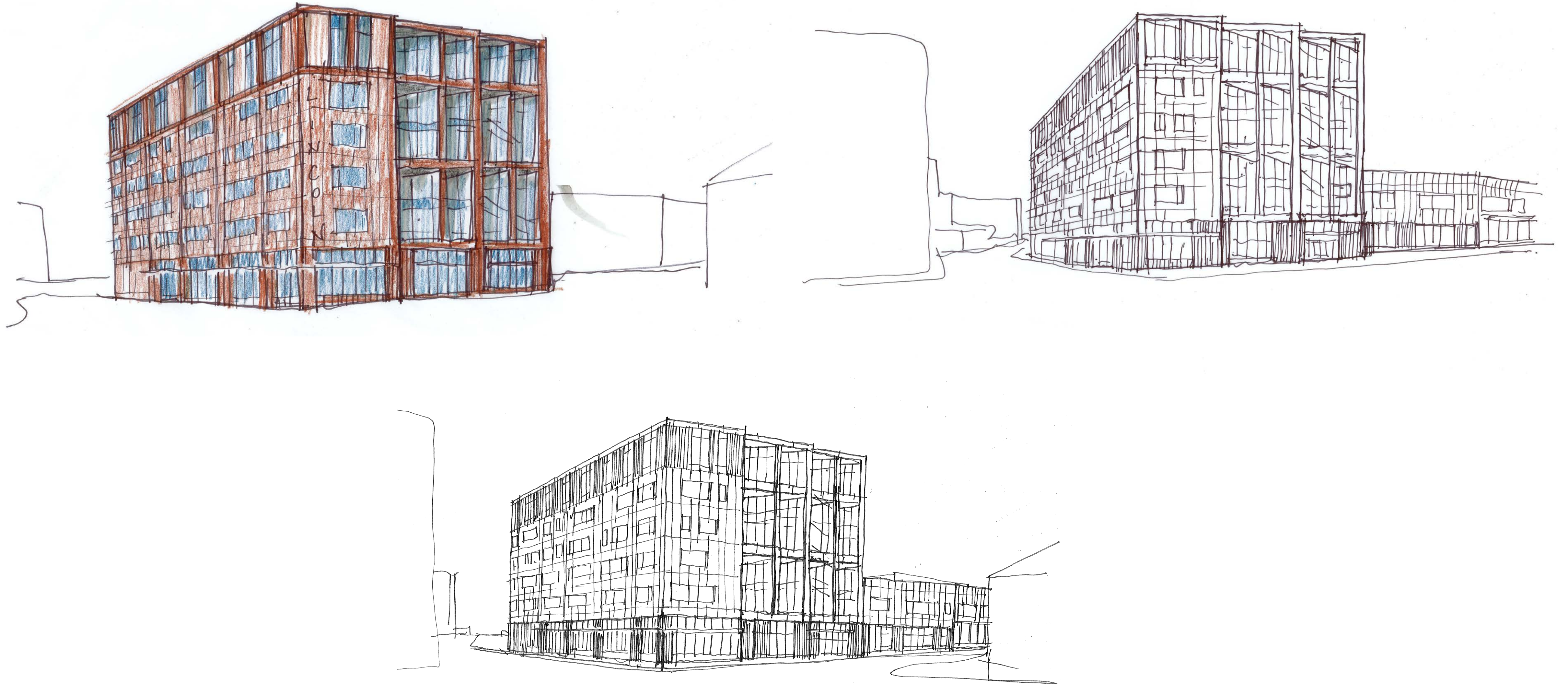
VIEW FROM SW SALMON STREET CURRENT SKETCH



VIEW FROM SW SALMON STREET



VIEW FROM SW 18TH AVE DEVELOPMENTAL SKETCHES



VIEW FROM SW 18TH AVE CURRENT SKETCH



VIEW FROM SW 18TH AVENUE



VIEW FROM SW 18TH AVE LOOKING SW DEVELOPMENTAL SKETCHES



VIEW FROM SW 18TH AVE LOOKING SW CURRENT SKETCH



VIEW FROM SW 18TH AVE LOOKING SW CURRENT SKETCH



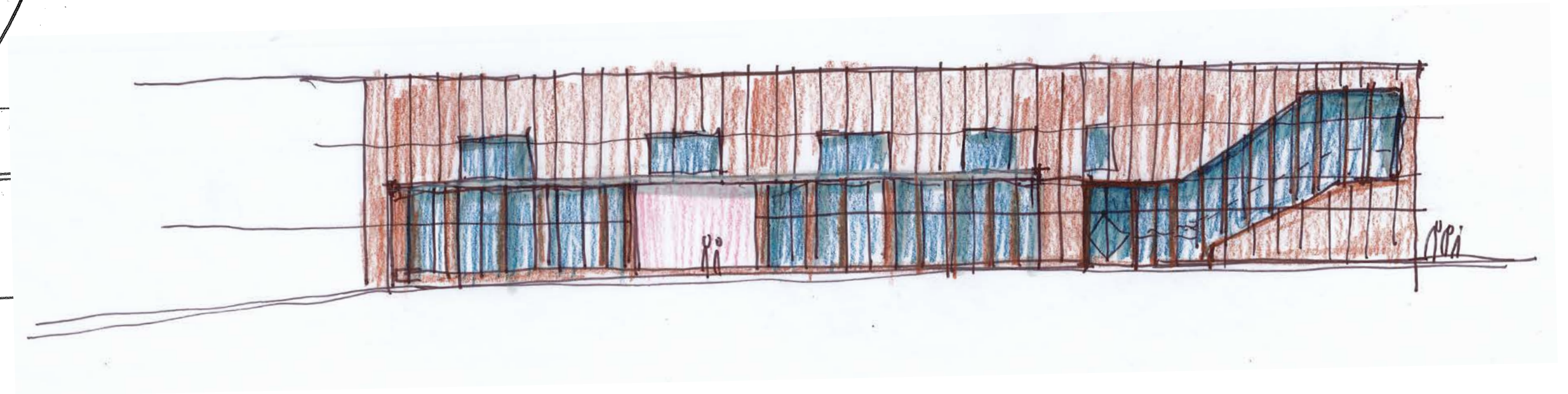
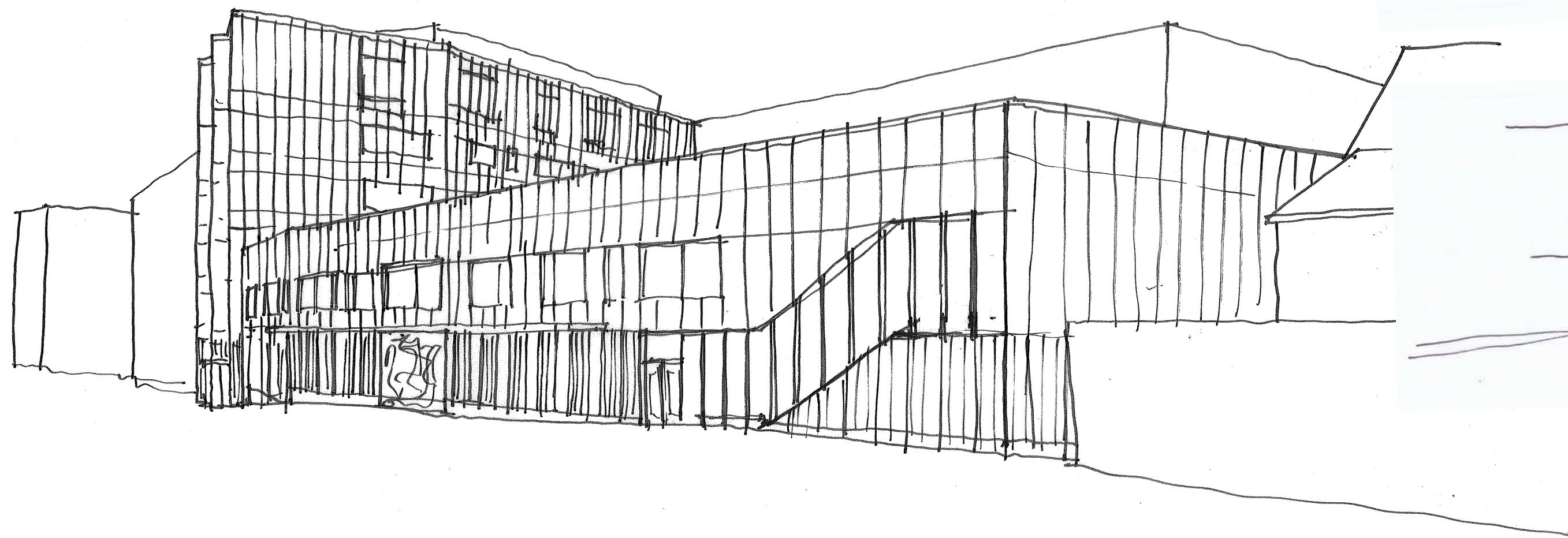
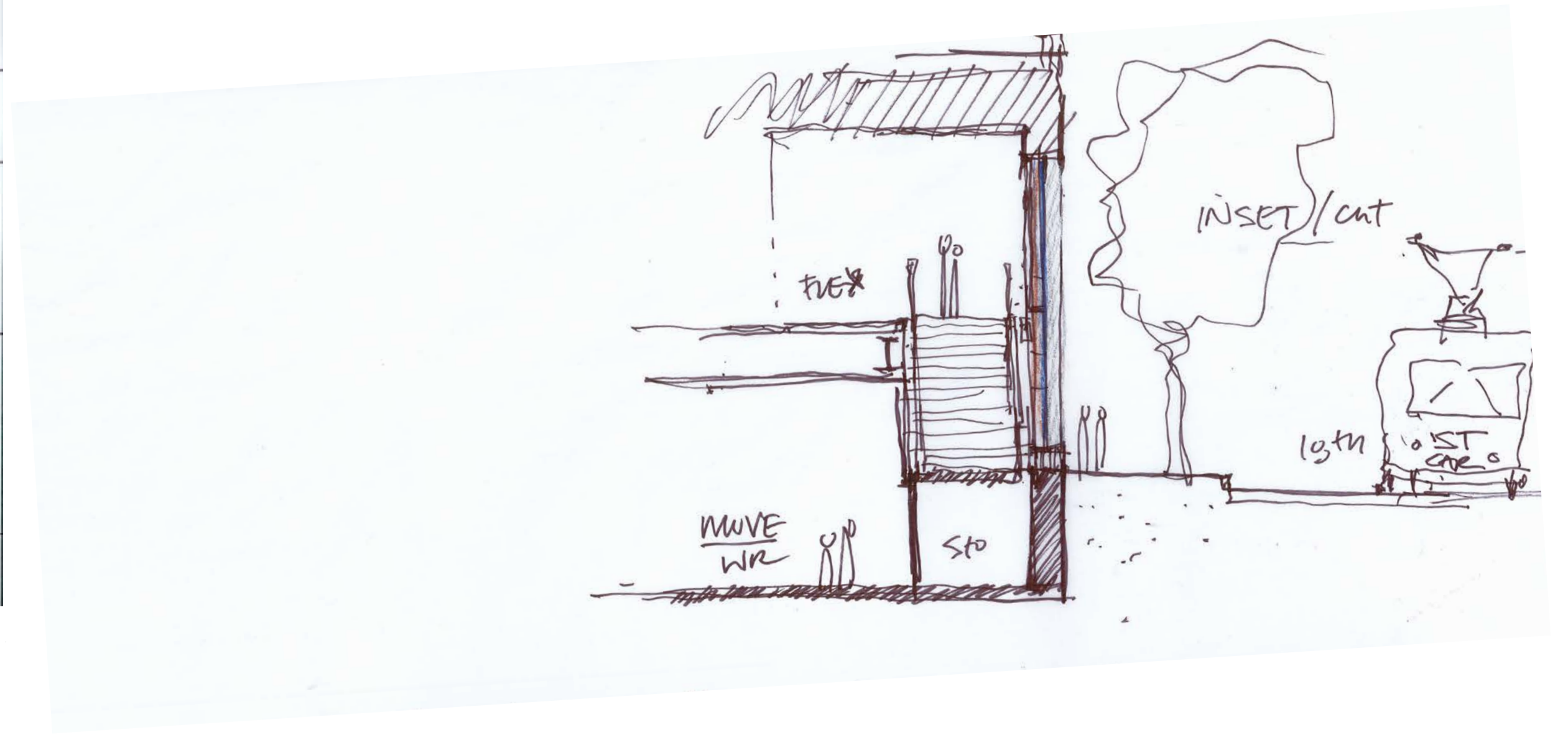
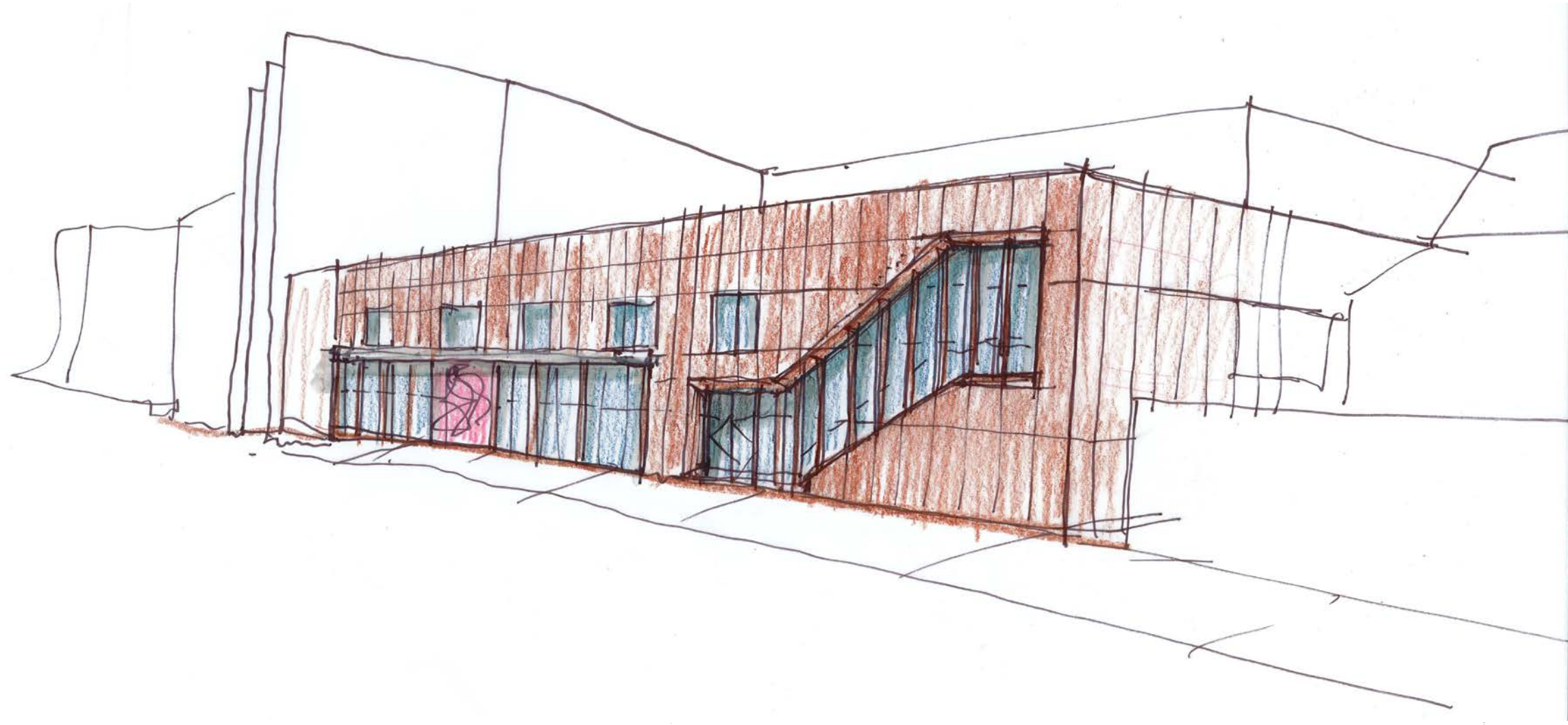
VIEW FROM SW 17TH AVE CURRENT SKETCH



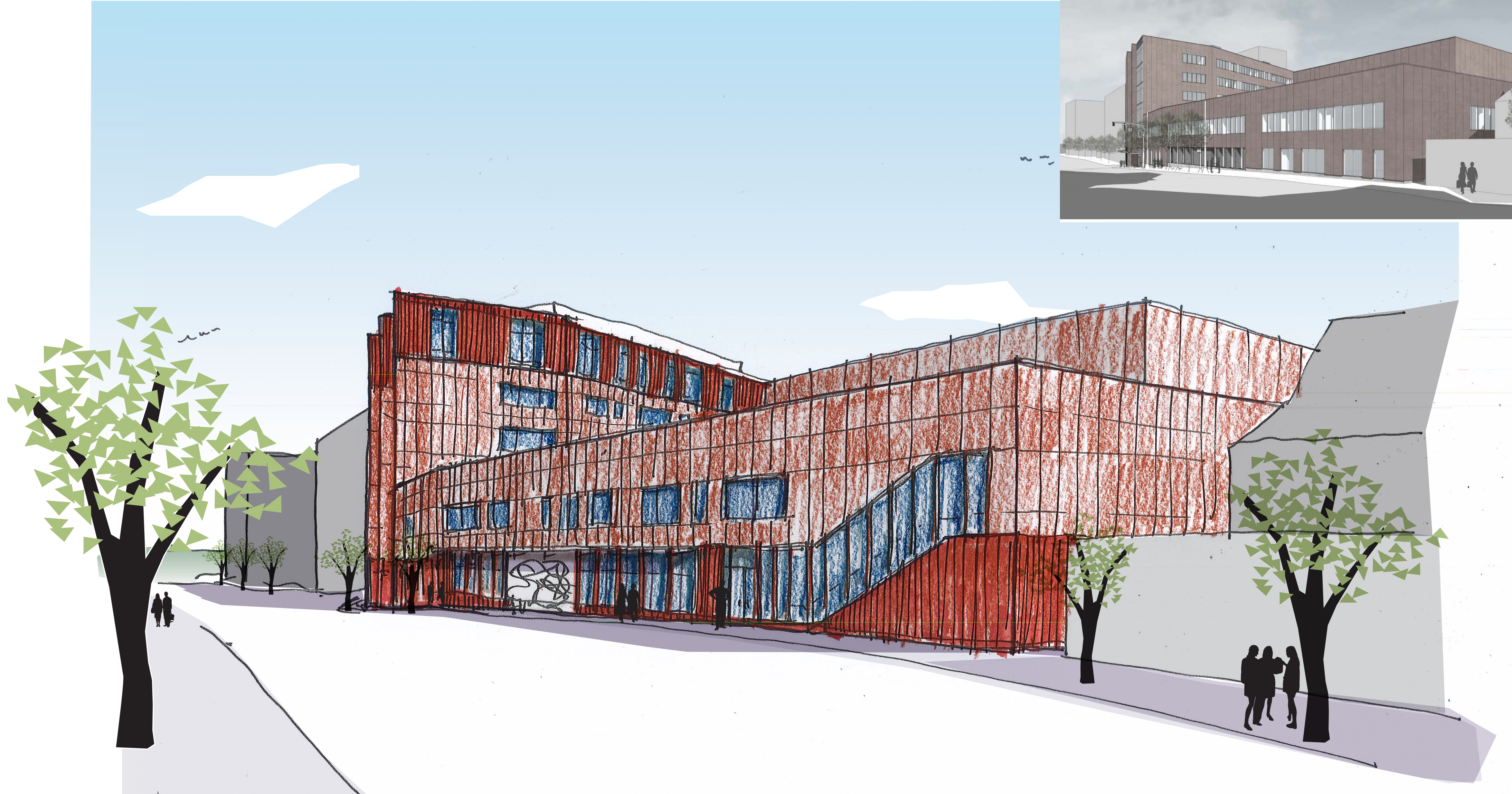
VIEW FROM SW 17TH AVENUE



VIEW FROM SW 18TH AVE LOOKING NORTHEAST DEVELOPMENTAL SKETCHES



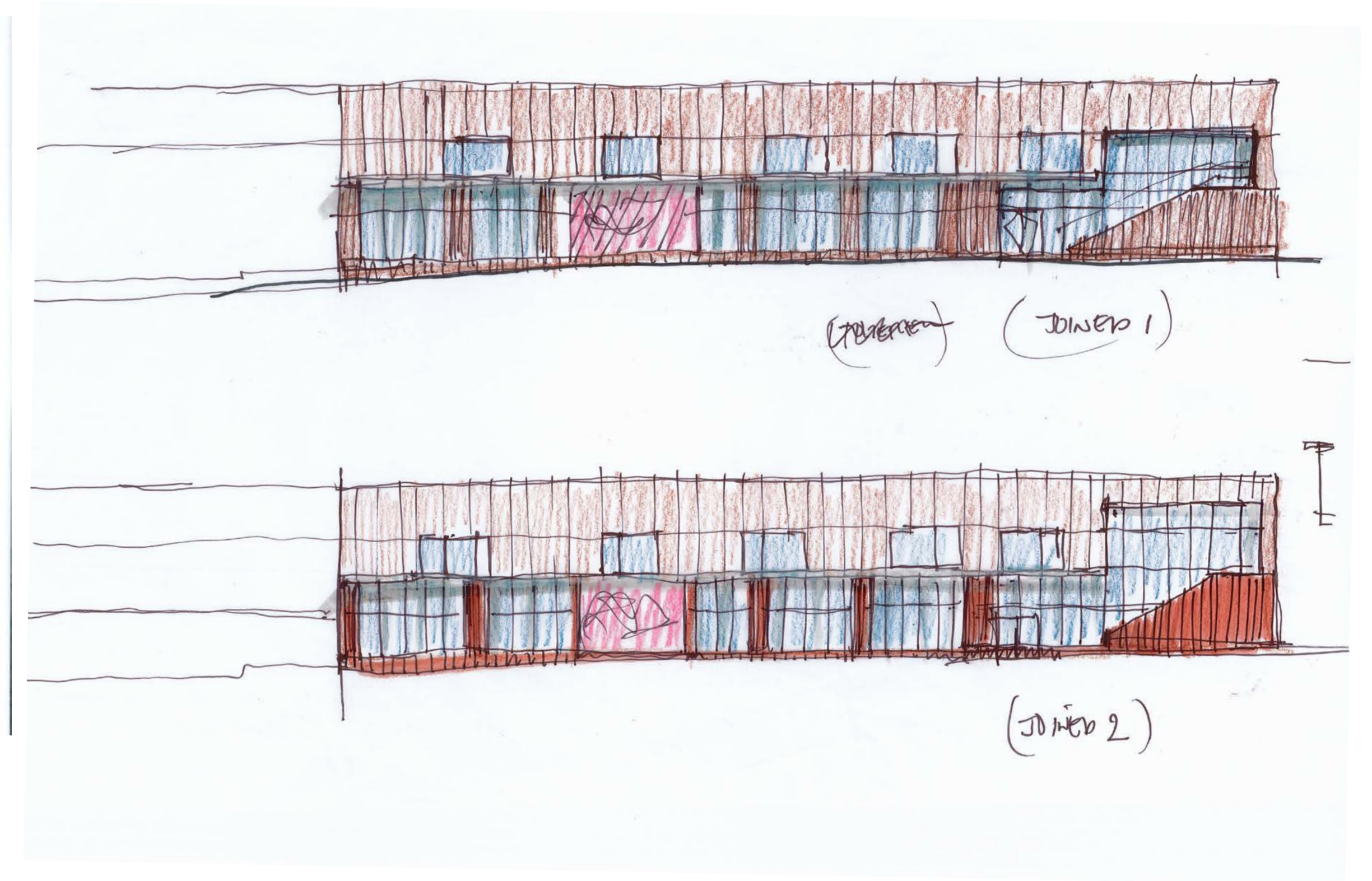
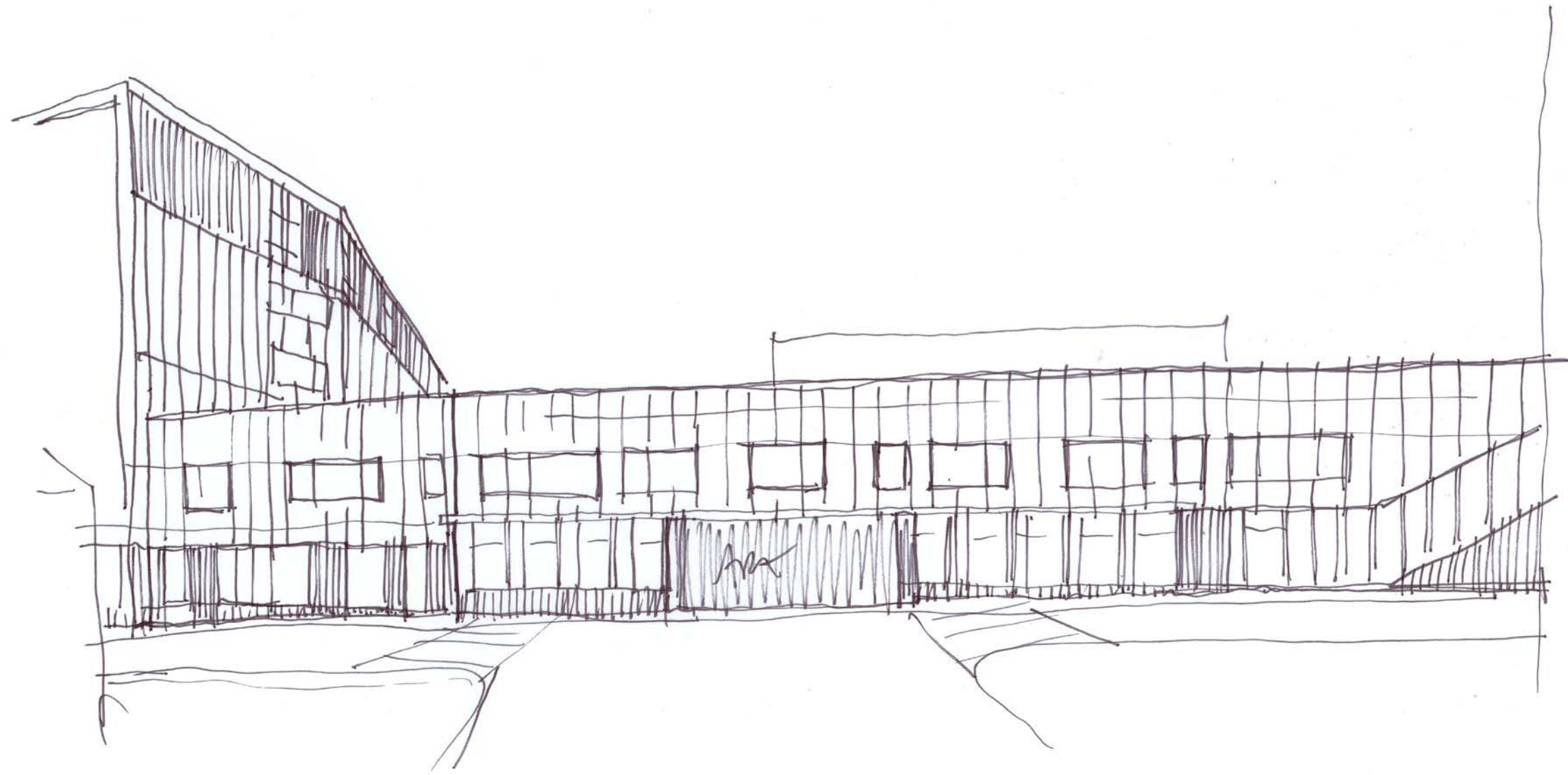
VIEW FROM SW 18TH AVE LOOKING NORTHEAST CURRENT SKETCH



VIEW FROM SW 18TH AVENUE LOOKING NORTHEAST



VIEW FROM SW MAIN ST DEVELOPMENTAL SKETCHES



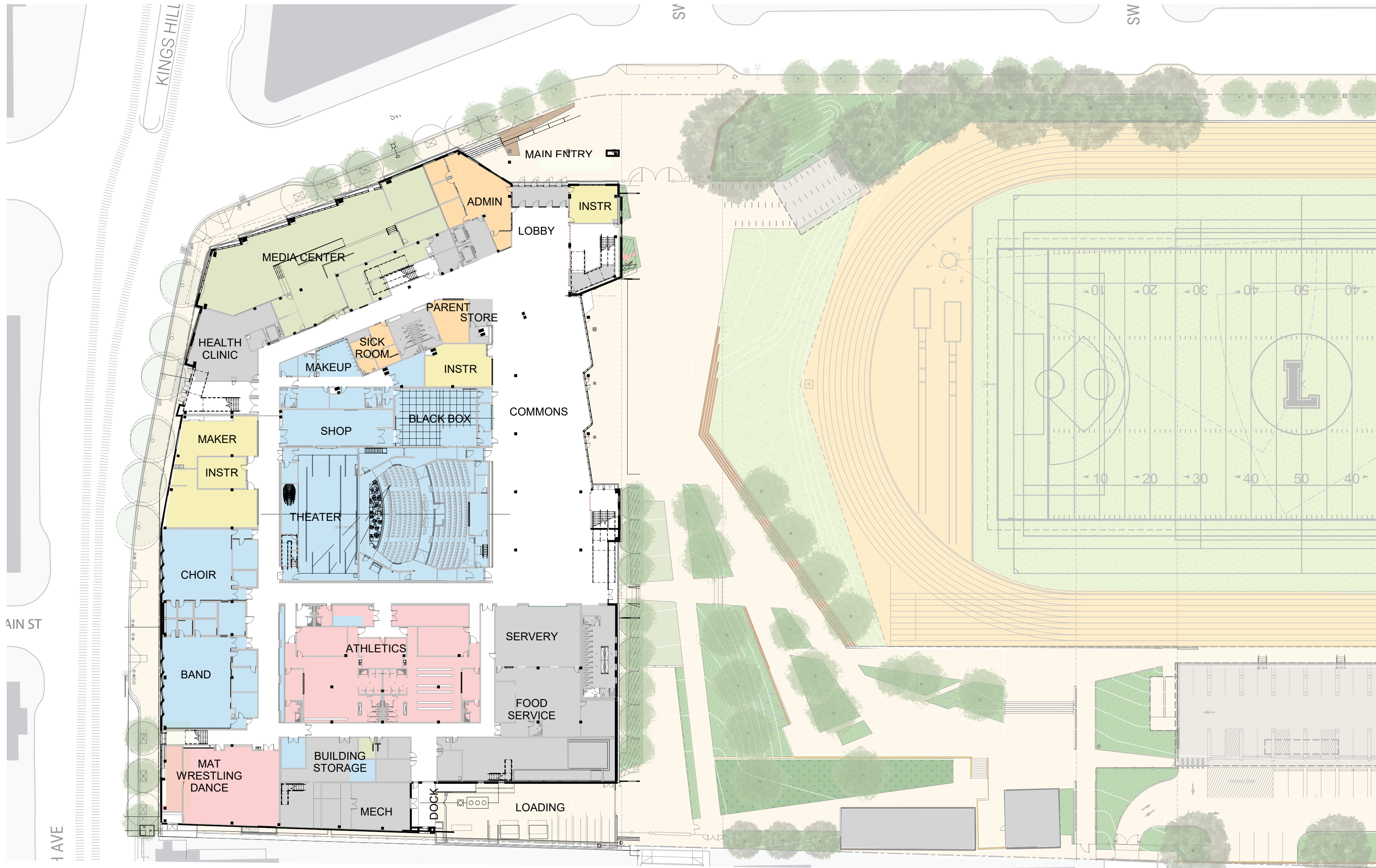
VIEW FROM SW MAIN ST CURRENT SKETCH



VIEW FROM SW MAIN STREET

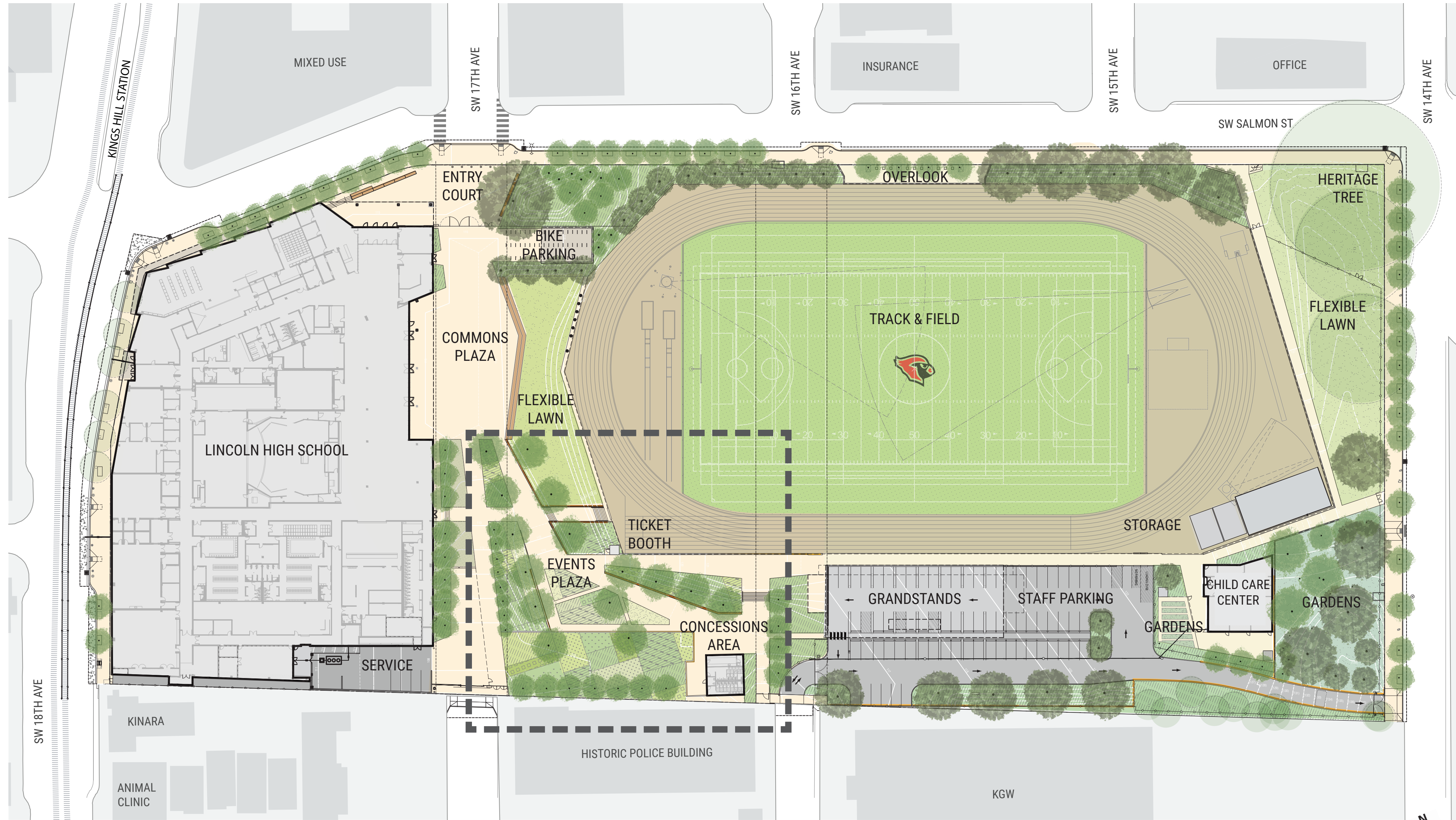


FLOOR PLANS GROUND

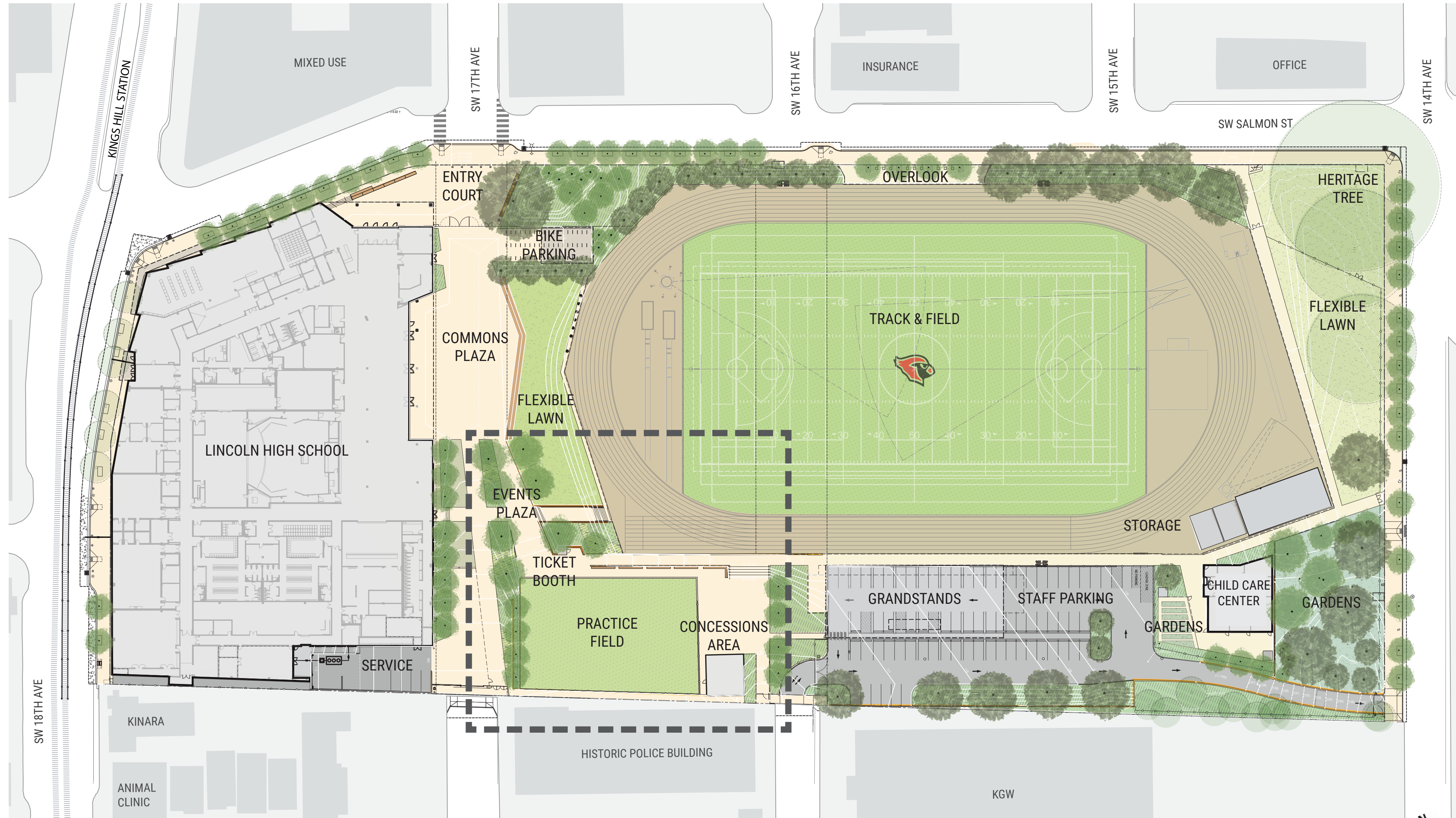


- INSTRUCTIONAL, TECH ACCESS
- ADMIN, COUNSELING, SPED
- FINE AND PERFORMING ARTS
- ATHLETICS, HEALTH
- SERVICE PROVIDERS, MISCELLANEOUS
- MEDIA CENTER
- SCIENCE

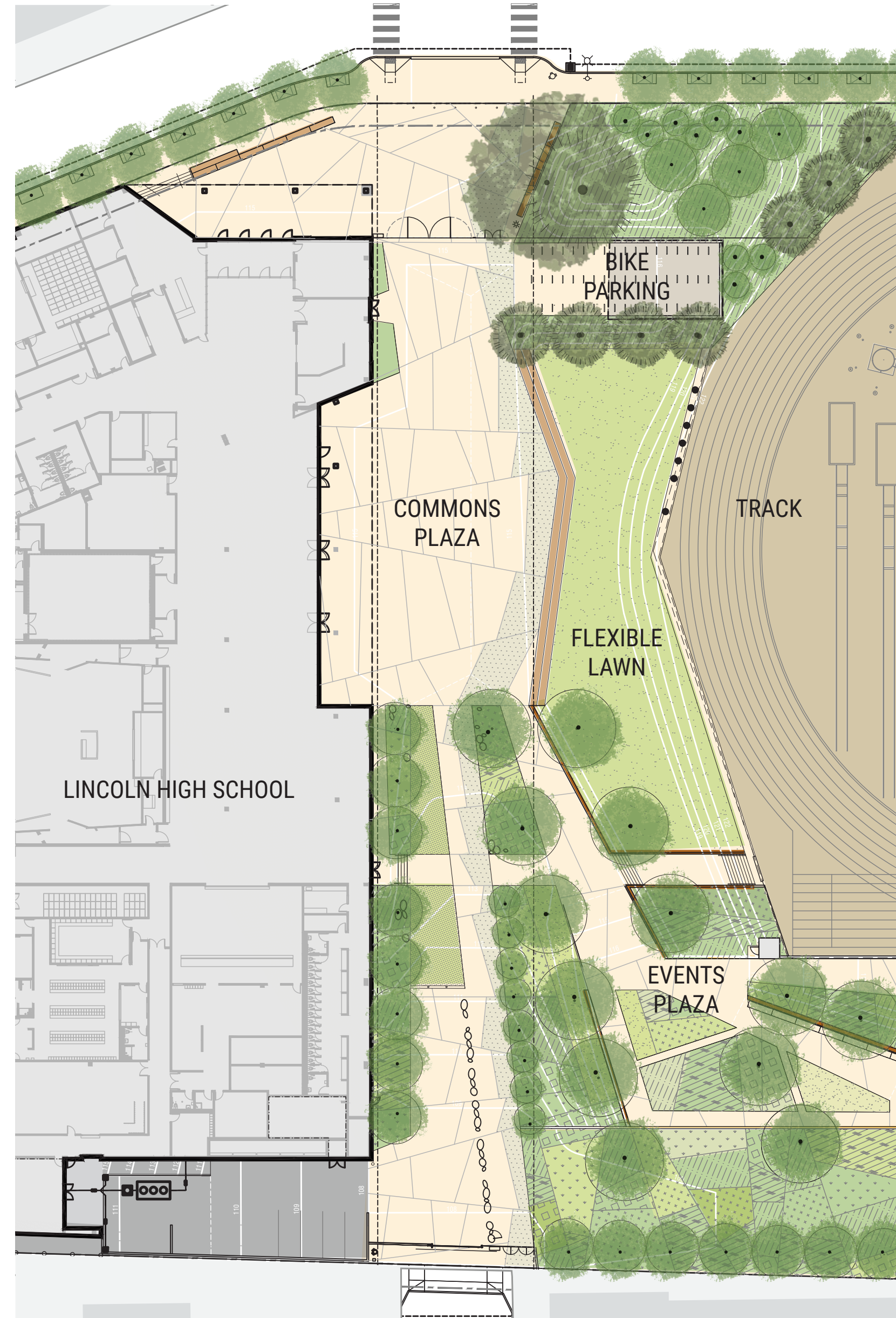
SITE PLAN



SITE PLAN ALTERNATE



SITE PLAN 17TH AVE CORRIDOR



PUBLIC COMMENTS

THANK YOU